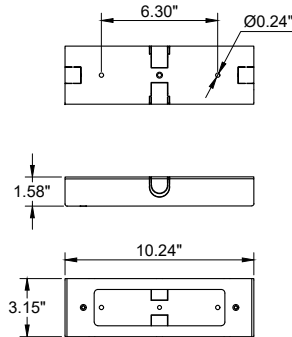


INSTALLATION AND SERVICE MANUAL

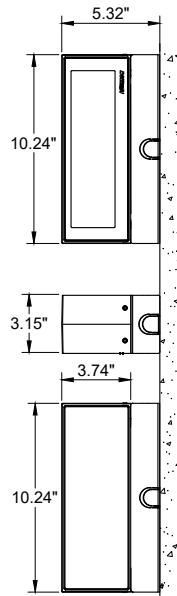
For Installation of Leeds 6 & 5 Surface Wall light With Surface Conduit Decorative Trim
Model. ULEE-30021-SCE & ULEE-30051-SCE

Product drawing (dimensions)

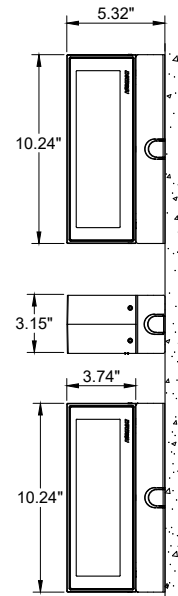
SUITABLE FOR WET LOCATIONS



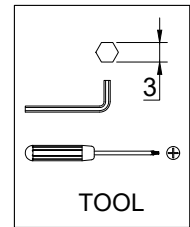
MOUNTING DETAIL
SURFACE CONDUIT
DECORATIVE TRIM ASSEMBLY



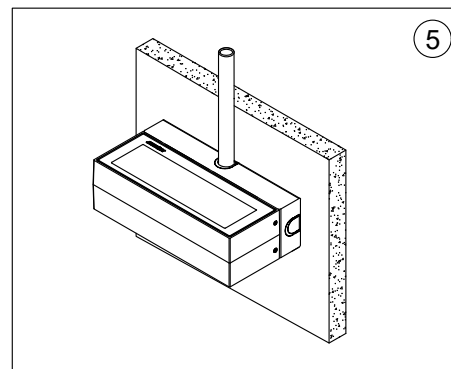
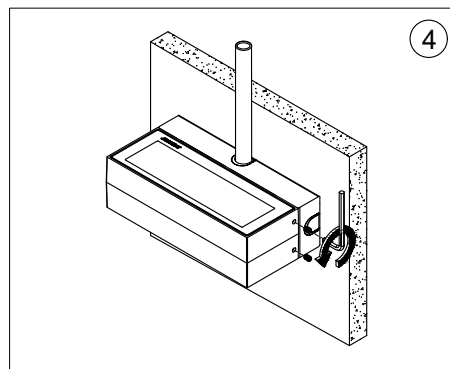
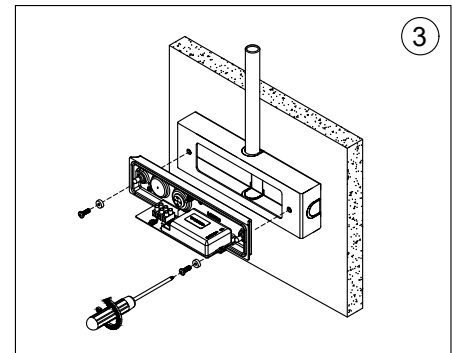
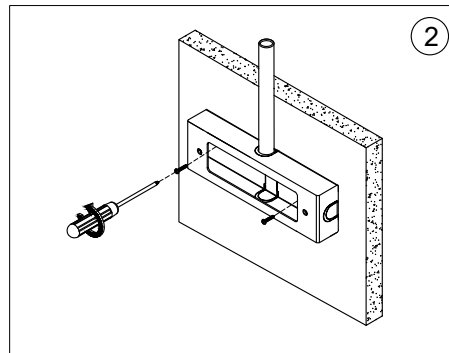
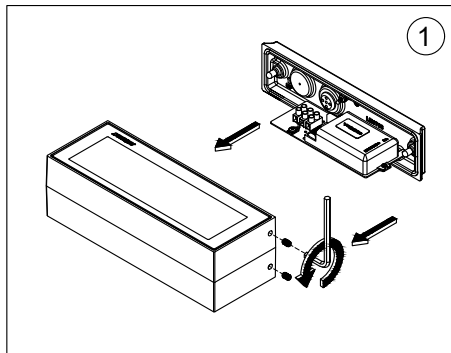
ULEE-30021



ULEE-30051



TOOL



Notice to installer :

- 1.WIRING INSTRUCTIONS Warning :** RISK OF FIRE AND ELECTRICAL SHOCK. : FIXTURE MUST BE INSTALLED BY A QUALIFIED ELECTRICIAN ONLY>FIXTURE IS INTENDED FOR INSTALLATION IN ACCORDANCE WITH THE NATIONAL ELECTRICAL CODE, LOCAL AND FEDERAL CODE SPECIFICATIONS. DISCONNECT POWER BEFORE SERVICING.
- 2.This fixture has a VOLTAGE SPECIFIC BALLAST,Check that the supply voltage is the same as the installed ballast voltage.**

Ligman Lighting USA

7144 NE Progress Court, Hillsboro
Oregon, 97124, USA
Tel : 503 645 0500 | Fax : 503 645 8100